



NSM2-100 3P



NSM2-160 3P

Moulded Case  
Circuit Breaker

### Application

NSM2 Series moulded case circuit breaker is one of new type breakers which our company adopts international advanced design and manufacture technology to develop. The rated insulating voltage is 750V. Suitable for AC 50Hz (60Hz). Rated working voltage 690V or below, rated working current is 12.5A to 630A of circuit and used in distributing electric energy. Non-frequent making and breaking in the normal conditions and protecting when circuit and installation are overload, short circuit and lacking voltage. Rated shell-rack and the breaker whose current is under 400A, take protection effect when mouse cage motor's non-frequent start, breaking off working and protecting form overload, short circuit and lacking voltage. The product conforms to GB14048.2, IEC 60947-2 standards.

### Main Technical Specifications

Type	Rated current of trip (In A)	Pole number	Rated insulating voltage (V)	Rated operating distance (mm)	Arcing-over distance (mm)	Ultimate short circuit breaking capacity (kA)	Short circuit breaking capacity (kA)	Operation performance			
								ON	OFF		
NSM2-100D	12.5,5,16, 20,25,32, 40,50,63, 80,100,	3P 4P	950	≤690	0	18	18	1500	8500		
NSM2-100N										25	25
NSM2-100H										70	70
NSM2-100L										150	150
NSM2-160D	16,20,25, 32,40,50, 63, 80, 100,125, 160					1000	7000				
NSM2-160N								25	25		
NSM2-160H								35	35		
NSM2-160L								70	70		
NSM2-250D	160,180, 200,225, 250					1000	7000				
NSM2-250N								25	25		
NSM2-250H								36	36		
NSM2-250L								70	70		
NSM2-400D	200,225, 250,300, 315,400	1000	4000								
NSM2-400N				150	150						
NSM2-400H				25	25						
NSM2-400L				36	36						
NSM2-630D	315,350, 400,500, 600,630	1000	4000								
NSM2-630N				70	70						
NSM2-630H				150	150						
NSM2-630L				35	35						

### Working Conditions

Rated current of	Thermodynamic release(ambient temp+40℃)		Operational current of magnetic release(A)
	1.05In(cold state) inoperation	1.30In(heat state) operative time(h)	
In≤63	≥1	< 1	10In ± 20%
63≤In≤100	≥2	< 2	10In ± 20%
100≤In≤630	≥2	< 2	5-10In ± 20%

**Working Conditions**

Rated current of release(A)	Thermodynamic release(ambient temp+40℃)				Operational current of magnetic release(A)
	1.0In(cold state) operative time(h)	1.20In(heat state) operative time(h)	1.50In(heat state) operative time(h)	1.01In (heat state) operative time(h)	
12.5≤In≤400	≥2	< 2	≤4min	2S<Tp≤10S	12In ± 20%

**Outline and Installation Dimensions**



NSM2-250 3P



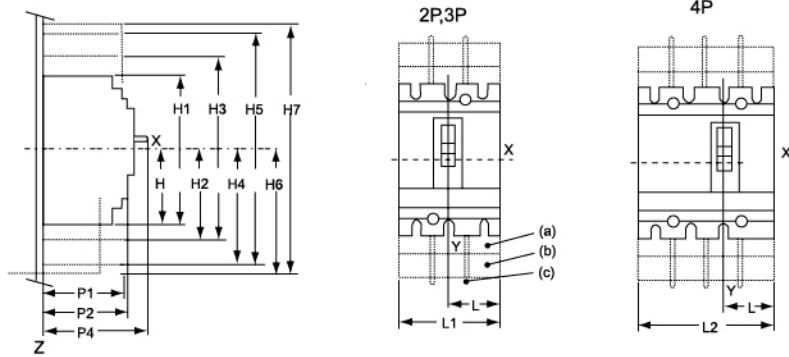
NSM2-400 3P



NSM2-630 3P

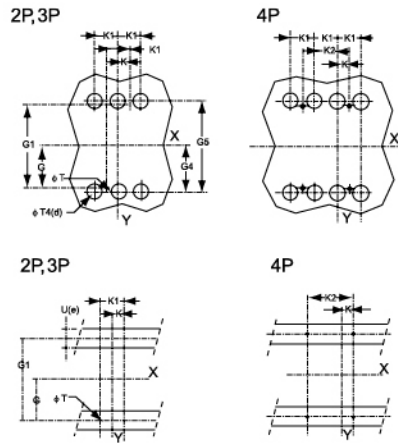


NSM2-100 4P



Installation mounting on the back panel

Installation on the guide track



**Outline and Mounting Size**

MM	C	C1	C2	C3	C6	C7	C20	C21	G	G1	G4
NSM2-100/160/250D/N/H/L	29	76	54	108	43	104	34	86	62.5	125	70
NSM2-400/630D/N/H/L	41.5	116	92.5	184	53	146	46.5	126	100	200	113.5

MM	G5	H	H1	H2	H3	H4	H5	H6	H7	K	K4
NSM2-100/160/250D/N/H/L	104	80.5	161	94	188	160.5	321	178.5	357	17.5	35
NSM2-400/630D/N/H/L	227	127.5	255	142.5	285	240	480	237	474	22.5	45

MM	K2	L	L1	L2	P1	P2	P4	P5	P6	R	R1
NSM2-100/160/250D/N/H/L	70	52.5	105	140	81	86	111	83	88	14.5	29
NSM2-400/630D/N/H/L	90	70	140	185	95.5	110	168	107	112	31.5	63

MM	R2	R4	R5	R6	R7	R12	R13	∅T	∅T4 (Ue)
NSM2-100/160/250D/N/H/L	54	108	143	29	58	43	86	6	22 ≤32
NSM2-400/630D/N/H/L	71.5	143	188	46.5	93	63	126	6	32 ≤32

Moulded Case  
Circuit Breaker